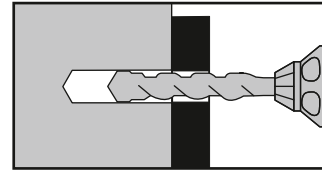
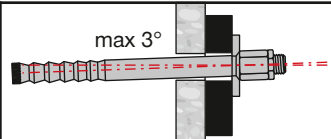


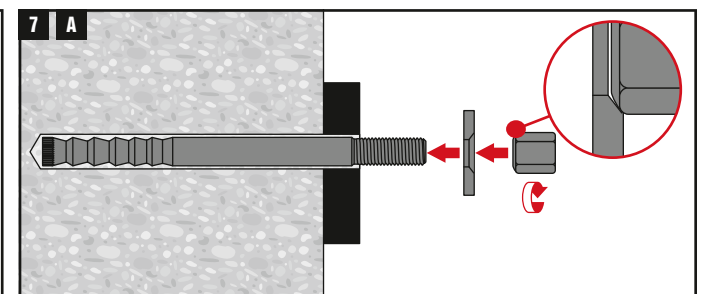
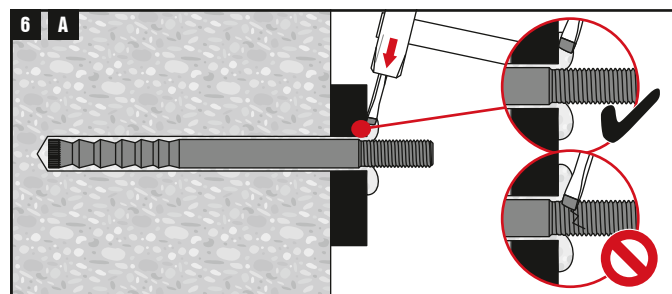
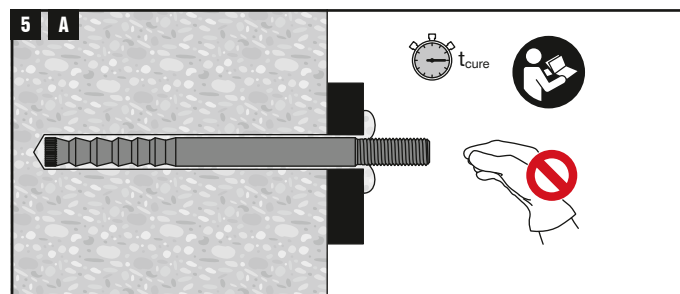
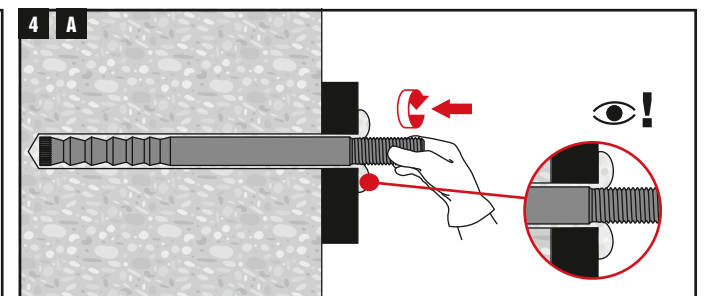
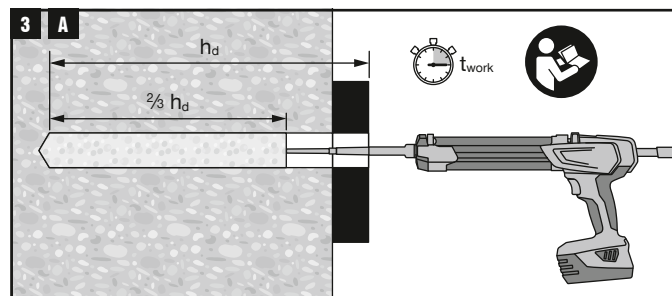
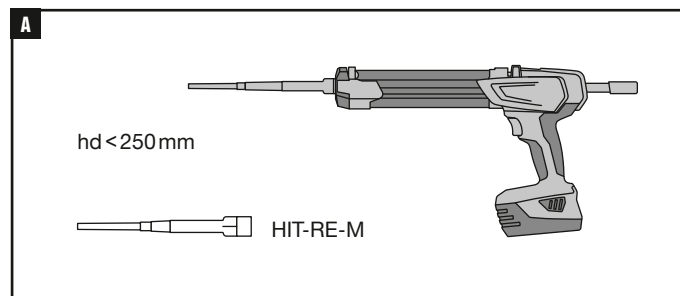
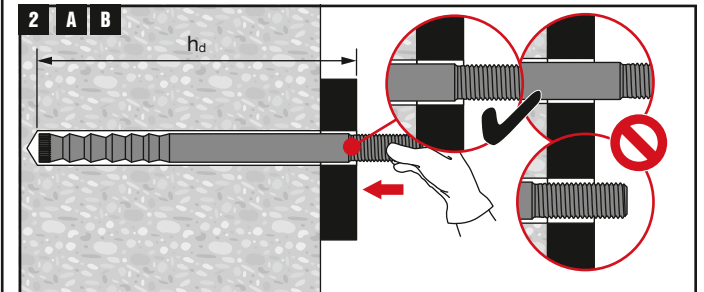
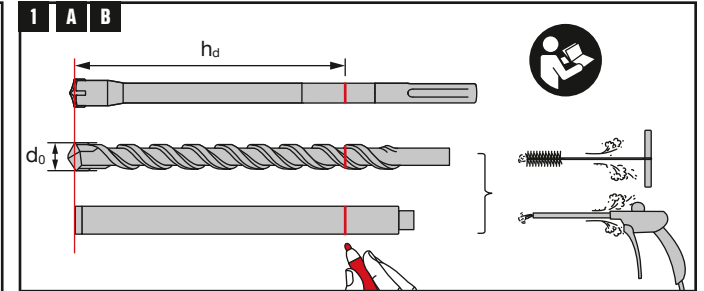
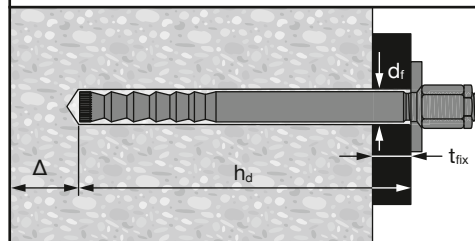


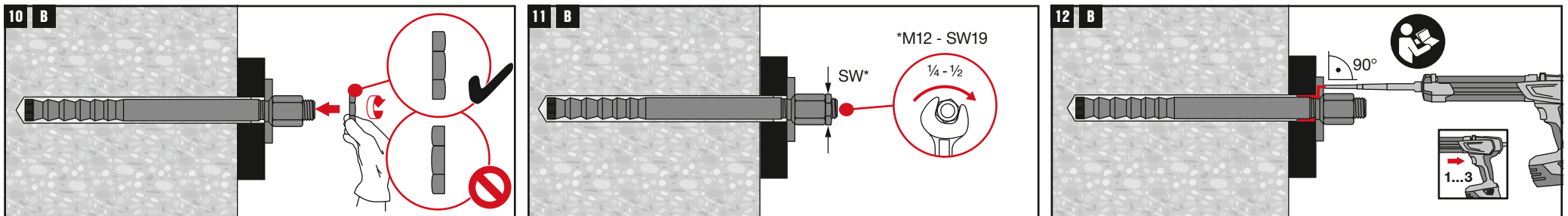
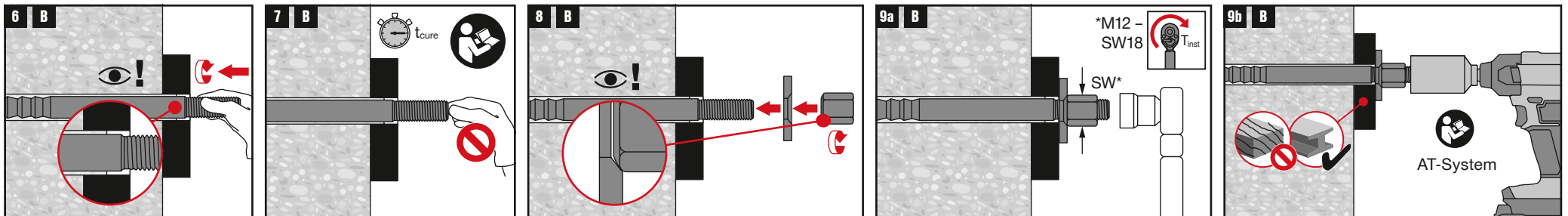
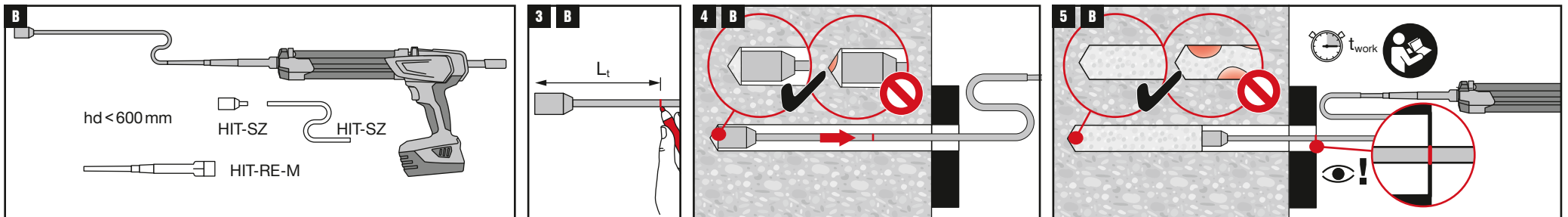
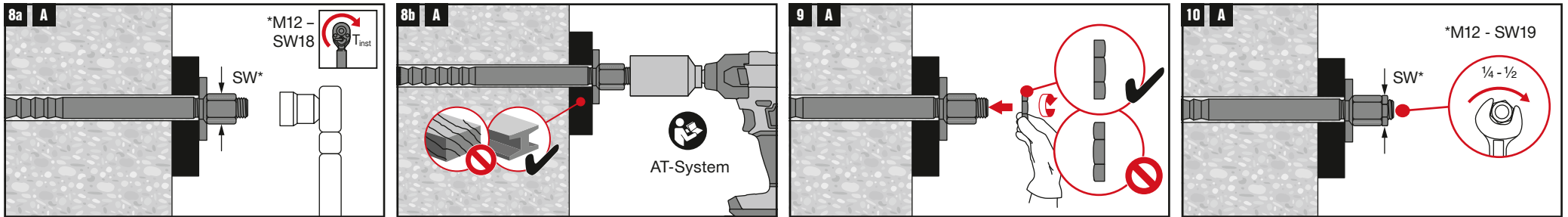
2237662-04.2025

HAS-D	$d_r$ [mm]	$t_{fix}$ [mm]	$d_o$ [mm]	$h_d$ [mm]	$\Delta$ [mm]	$L_1$ [mm]	SW [mm]	AT System	$T_{inst}$ [Nm]
M12×160	16	12-25	14	130	$\geq 25$	90	18/19*	SIW 4AT-22 & SIW 6AT-22	30
M12×185	16	12-50	14	155	$\geq 25$	110	18/19*	+SI-AT-22	30
M16×200	20	16-30	18	163	$\geq 37$	122	24	SIW 6AT-22 +SI-AT-22	50
M16×220	20	16-50	18	183	$\geq 37$	138	24		50
M16×245	20	16-75	18	208	$\geq 37$	160	24		50
M16×275	20	16-105	18	238	$\geq 37$	183	24		50
M20×280	26	20-50	24	230	$\geq 50$	174	30		80
									80



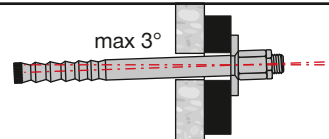
HIT-HY 200-A  
HIT-HY 200-R  
HIT-HY 200-A V3  
HIT-HY 200-R V3



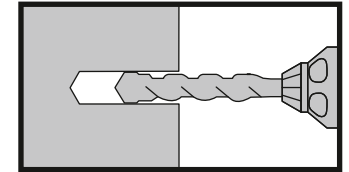




-10°C - 40°C / 14°F - 104°F



HIT-HY 200-A  
HIT-HY 200-R  
HIT-HY 200-A V3  
HIT-HY 200-R V3



HAS-D	$d_f$ [mm]	$t_{fix}$ [mm]	$d_o$ [mm]	$h_o$ [mm]	$\Delta$ [mm]	$h_{ef}$ [mm]	$L_p$	SW [mm]	AT System	$T_{inst}$ [Nm]
M12×160	14	12 - 25	14	$130-t_{fix}$	$\geq 25$	$125-t_{fix}$	$70-t_{fix}$	18/19*	SIW 4AT-22 & SIW 6AT-22	30
M12×185	14	12 - 50	14	$155-t_{fix}$	$\geq 25$	$150-t_{fix}$	$90-t_{fix}$	18/19*	+SI-AT-22	30
M16×200	18	16 - 30	18	$163-t_{fix}$	$\geq 37$	$155-t_{fix}$	$110-t_{fix}$	24	SIW 6AT-22	50
M16×220	18	16 - 50	18	$183-t_{fix}$	$\geq 37$	$175-t_{fix}$	$125-t_{fix}$	24		50
M16×245	18	16 - 75	18	$208-t_{fix}$	$> 37$	$200-t_{fix}$	$150-t_{fix}$	24	+SI-AT-22	50
M16×275	18	16 - 105	18	$238-t_{fix}$	$> 37$	$230-t_{fix}$	$180-t_{fix}$	24		50
M20×280	24	20 - 50	24	$230-t_{fix}$	$\geq 50$	$220-t_{fix}$	$165-t_{fix}$	30		80

