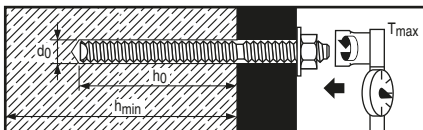


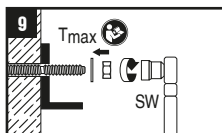
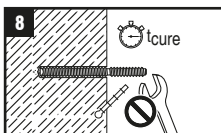
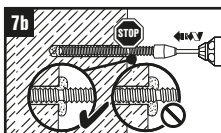
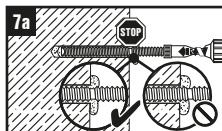
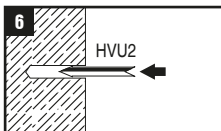
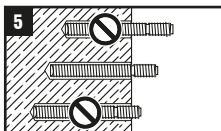
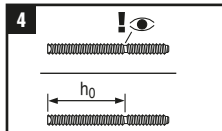
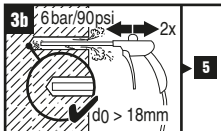
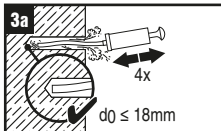
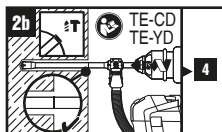
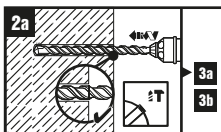
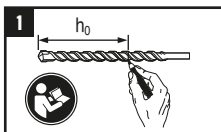
HVU2 M16x125



[°C]	[°F]	t_{cure}
-10...-6	14...22	5 h
-5...1	23...31	3 h
0...9	32...49	20 min
10...19	50...67	10 min
20...40	68...104	5 min

2173871 03.2017

HVU2	Anchor Size	d ₀ (mm)	h ₀ (exact) (mm)	h _{min} (mm)	T _{max} (Nm)	HIT-RB	Setting machine		
							TE(-A)	SF(H)	(RPM)
M16x125	M16	18	125	160	80	18	1...40	6, 8, 10, 22	450...1300



CE
 17
 Hilti AG
 FL-9494 Schaan
 Hilti Werke
 1343-CPR-M 500-30/07.14
 ETA-16/0515
 Notified body 1343
 ETAG 001-1, -5 Option 1
 www.hilti.com

Info | Shop



qr.hilti.com/2164566

www.hilti.com
 Hilti = registered trademark
 of Hilti Corporation,
 Schaan, Liechtenstein

Made in Germany